

# Sample Pro Ltd.

Ph (403) 932-6723 Cell (403) 651-8155

## ➤ SETUP

1. With the shaker **TURNED OFF**, slide the Sample Pro unit onto the ¼” mounting plate.



2. Run the ratchet strap through the 'D' rings and around the front cross support on shaker. **SNUG** up the strap - do not over tighten!! If necessary, change the position of the 'D' rings so that the ratchet strap does not rub on the shaker screen.





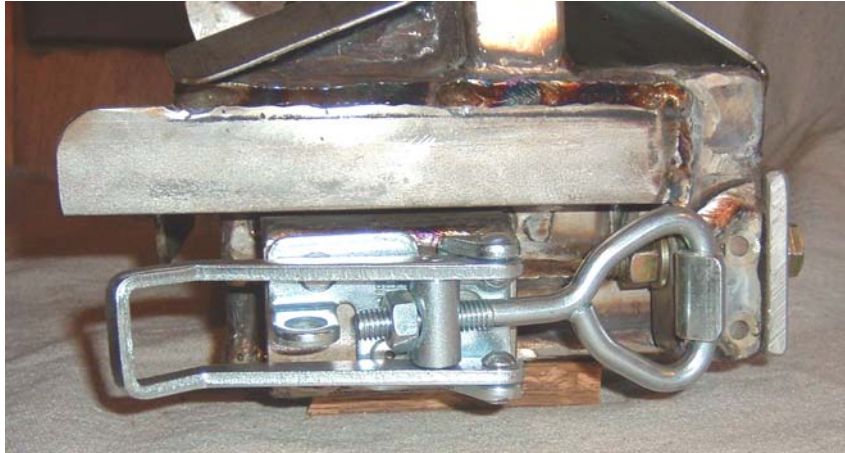
For Brandt Cobra shakers, run the ratchet strap under the motors and up the back side as shown



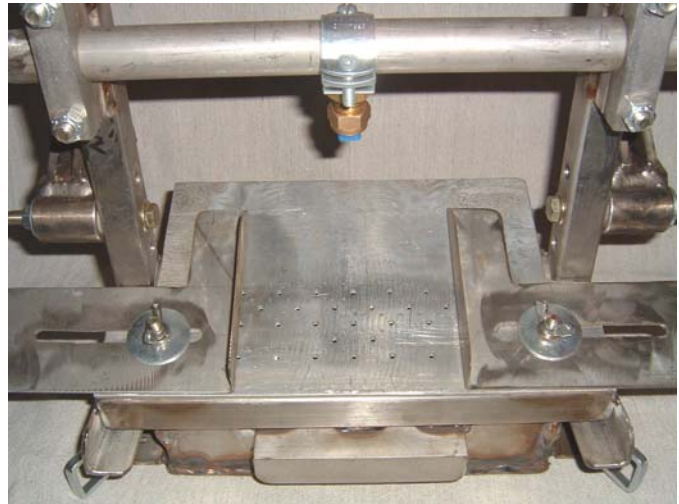
3. Adjust the angle of the Sample Pro so that the vertical uprights are either straight up and down or angled slightly forward.



4. Turn on the shaker and adjust the ratchet strap tension so that no vibration is visible. **DO NOT OVERTIGHTEN THE RATCHET STRAP!!** Vibration on the Sample Pro should be fairly gentle, and removal of the collector tray should be very easy. If there is too much vibration present, try to loosen the ratchet strap. If this still does not work, call for assistance.
5. Adjust the collector tray clamps so that they are tight, allowing **no vibration** of the collector tray.



6. Adjust the width of the cover plates so that the **collector tray fills to ½ full or less.**



7. Connect and turn on water. If nozzle does not spray, remove and clean the spray nozzle and the screen assembly. **DO NOT TURN OFF WATER IN WINTER** to prevent freezing.

# Sample Pro Ltd.

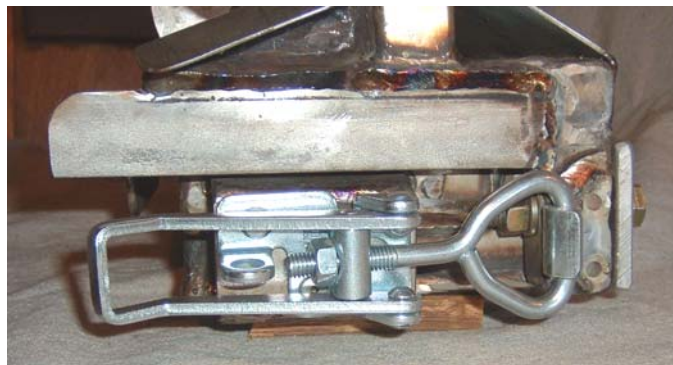
Ph. (403) 932-6723 Cell (403) 651-8155

## ➤ MAINTAINANCE

- It is very important to minimize the amount of vibrations in the ratchet strap. **ALWAYS MAKE SURE RATCHET STRAP IS TIGHT, BUT DO NOT OVERTIGHTEN.** Check for wear on the strap. Worn strap must be replaced to prevent breaking.
- Periodically check to make sure all lock nuts are tight.



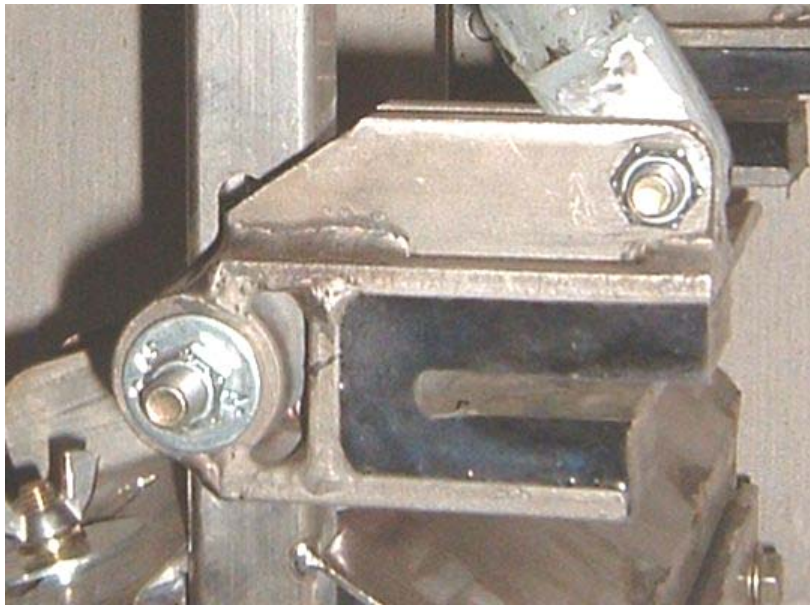
- Check to make sure there is **no vibration of the collector tray**. If any vibration occurs, tighten the clamps.



- Regularly pressure wash the collector tray screen so that it does not plug. If water does not drain from the tray, this is a good indication that the screen needs to be washed.



- Watch for wear on the urethane pads on the mounting bracket. The urethane clamps should fit **TIGHTLY** on the mounting plate. If worn, call for service.



- In winter, always make sure water is running to prevent freezing. Steam may also be used in place of water.

**Sample Pro Ltd.**  
**Ph. (403) 932-6723 Cell (403) 651-8155**

➤ **OPERATING PROCEDURE**

- ◆ Make sure the DCS is properly mounted to the shaker (See set up instructions). Inspect ratchet strap periodically for wear. Replace worn straps. Call for replacement of worn urethane clamps.
- ◆ Insert a sample collector tray into position and secure using latch clamps on both sides of the tray. If latch clamps are not snug, tighten.
- ◆ At the designated time, remove the sample collector tray by releasing the latch clamps. Sample collector tray should be 1/3 to 1/2 full of cuttings. If needed, adjust the upper sieve plate covers accordingly. Always make sure the wing nuts are tight after adjusting cover plates.
- ◆ As soon as one tray is removed, insert the second tray into position.
- ◆ If necessary, adjust the position of the DCS on the mounting plate to intercept the optimum stream of drill cuttings.
- ◆ If water spray has decreased or becomes uneven, remove the sprayer nozzle and clean.
- ◆ If freezing becomes an issue due to low water flow in very cold conditions, simply remove the sprayer nozzle and run steam through the hose and over the DCS.
- ◆ Periodically clean the sieve plate with spray gun to ensure all holes are not plugged.
- ◆ Periodically clean the sample collector tray screen with pressure washer to allow fluid to drain.
- ◆ Periodically inspect all nuts and tighten if necessary.